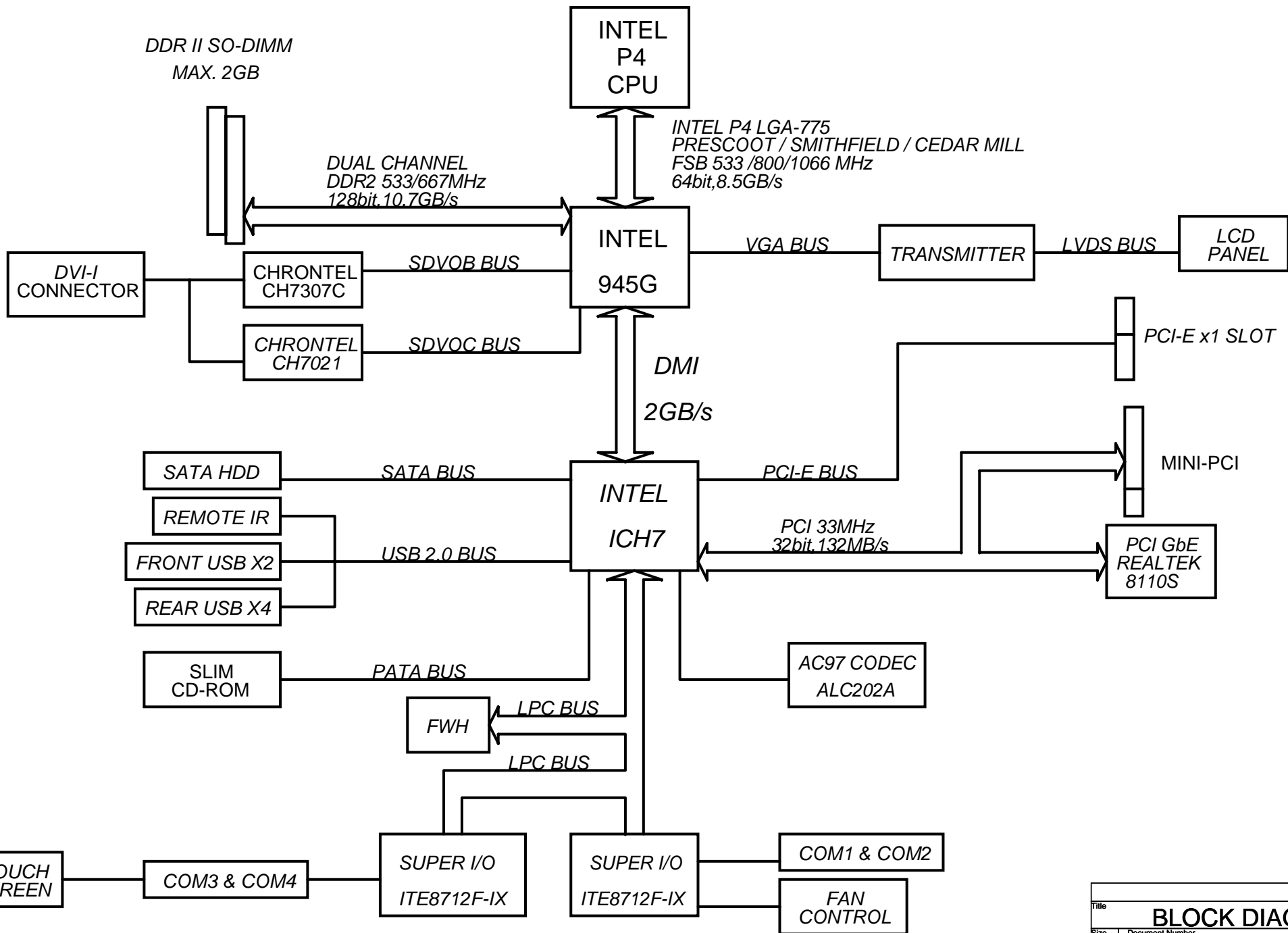
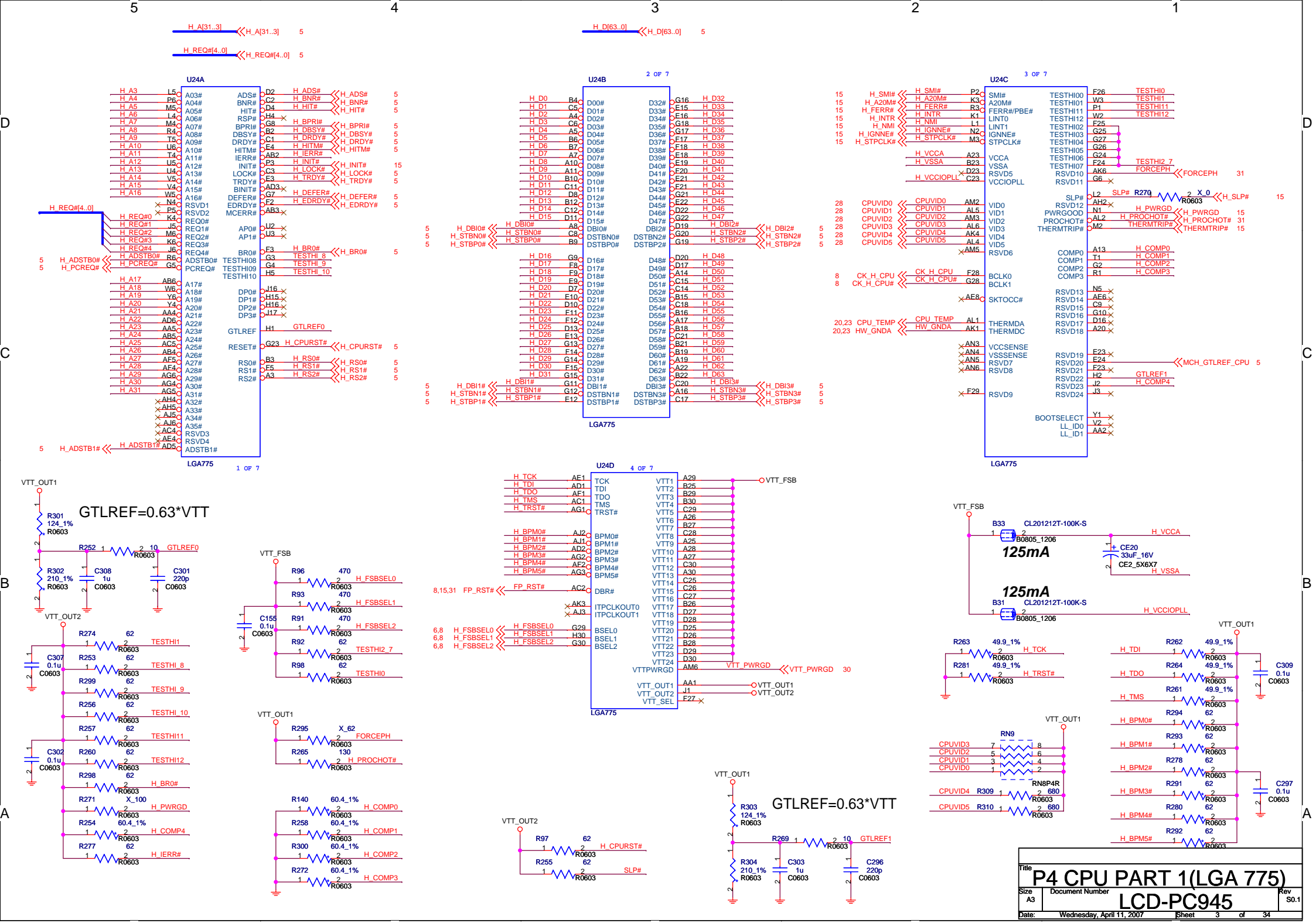


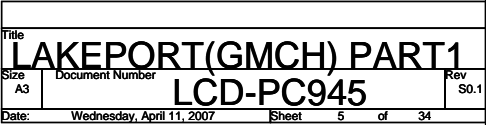
LCD-PC945 REFERENCE SCHEMATIC

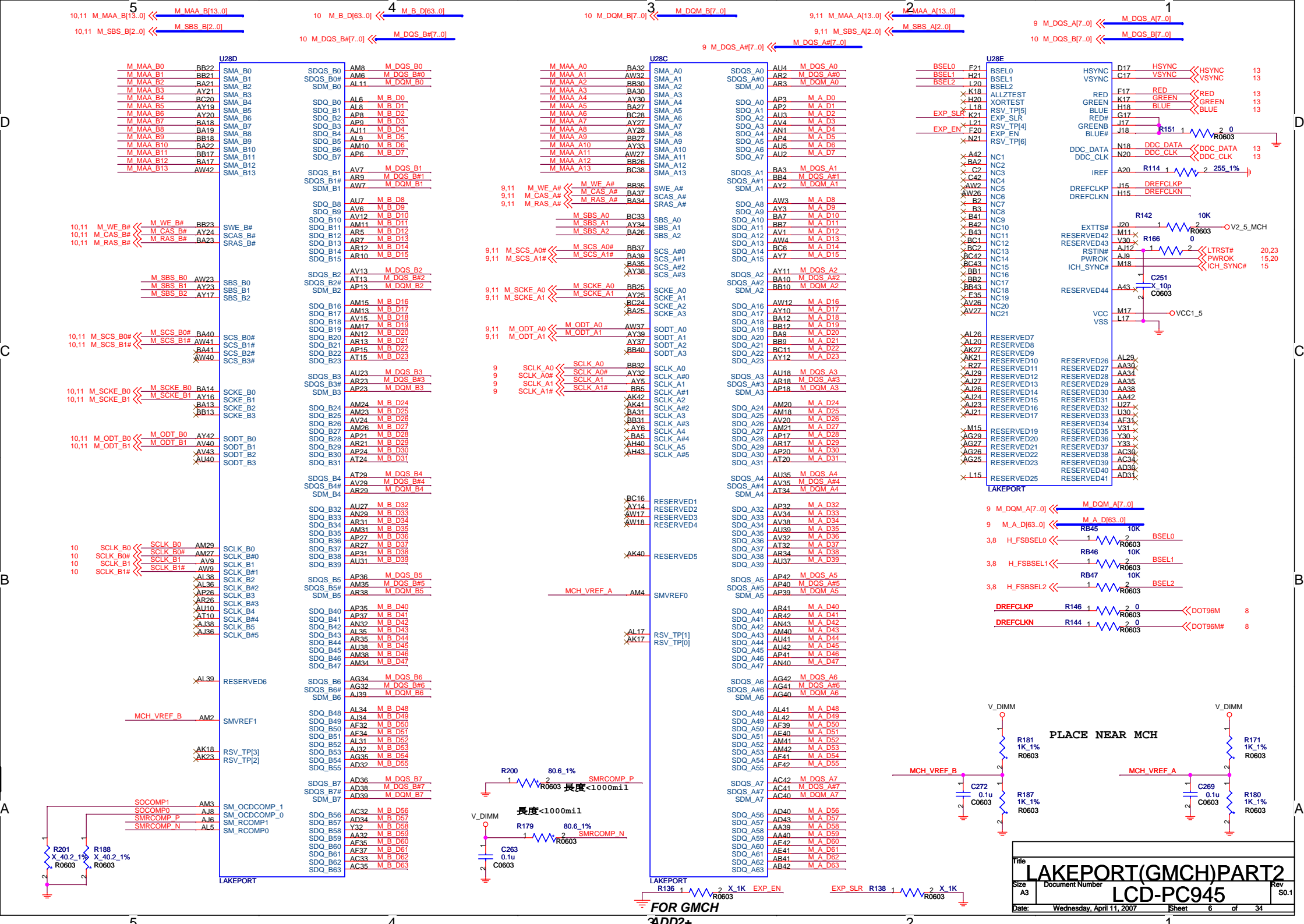
PAGE 01	INDEX SHEET
PAGE 02	BLOCK DIAGRAM
PAGE 03	P4 CPU PART 1(LGA775)
PAGE 04	P4 CPU PART 2(LGA775)
PAGE 05	LAKEPORT(GMCH)PART 1
PAGE 06	LAKEPORT(GMCH)PART 2
PAGE 07	LAKEPORT(GMCH)PART 3
PAGE 08	CLOCK(RTM862-487)
PAGE 09	DDR2 CHANNEL A SO-DIMM
PAGE 10	DDR2 CHANNEL B SO-DIMM
PAGE 11	DDR2 TERMINATION
PAGE 12	CH7307 & DVI CONNECTOR
PAGE 13	VGA CONNECTOR
PAGE 14	ICH7 PART 1
PAGE 15	ICH7 PART 2
PAGE 16	ICH7 PART 3
PAGE 17	IDE & SATA
PAGE 18	MINI PCI/VCC/VCC3
PAGE 19	CH7021
PAGE 20	LPC SIO 1
PAGE 21	LPC SIO 2
PAGE 22	COM PORT
PAGE 23	FWH & H/W MONITOR & FAN CTL
PAGE 24	PCI GIGALAN(RTL8110S)
PAGE 25	USB & RJ-45 CONNECTOR
PAGE 26	AC97 CDEC(ALC202A)
PAGE 27	AUDIO CONNECTOR
PAGE 28	CPU VCORE(VRD10.1)
PAGE 29	DISCRETE POWER 1
PAGE 30	DISCRETE POWER 2
PAGE 31	PCI-E SLOT & FPT
PAGE 32	TRANSMITTER
PAGE 33	PANEL DC-DC POWER



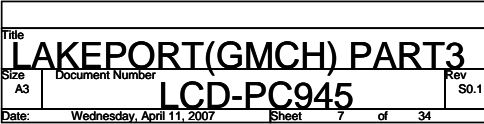
















6,11 M\_MAA\_A[13..0] << M\_MAA\_A[13..0]  
6 M\_A\_D[63..0] << M\_A\_D[63..0]  
6 M\_DQS\_A[7..0] << M\_DQS\_A[7..0]  
6 M\_DQS\_A#[7..0] << M\_DQS\_A#[7..0]  
6 M\_DQM\_A[7..0] << M\_DQM\_A[7..0]  
6,11 M\_SBS\_A[2..0] << M\_SBS\_A[2..0]

M\_MAA\_A0 102  
M\_MAA\_A1 101  
M\_MAA\_A2 100  
M\_MAA\_A3 99  
M\_MAA\_A4 98  
M\_MAA\_A5 97  
M\_MAA\_A6 94  
M\_MAA\_A7 92  
M\_MAA\_A8 93  
M\_MAA\_A9 91  
M\_MAA\_A10 105  
M\_MAA\_A11 90  
M\_MAA\_A12 89  
M\_MAA\_A13 116  
X 86  
X 84  
X 85  
M\_SBS\_A2 85

M\_SBS\_A0 107  
M\_SBS\_A1 106  
M\_SCS\_A0# 110  
M\_SCS\_A1# 115  
SCLK\_A1 30  
SCLK\_A1# 32  
SCLK\_A0 164  
SCLK\_A0# 166  
M\_SCKE\_A0 79  
M\_SCKE\_A1 80  
M\_CAS\_A# 113  
M\_RAS\_A# 108  
M\_WE\_A# 109  
SA0 198  
SMB\_CLK 200  
SMB\_DATA 197  
SMB\_DATA 195

6,11 M\_SCS\_A0#  
6,11 M\_SCS\_A1#  
6 SCLK\_A1  
6 SCLK\_A1#  
6 SCLK\_A0  
6 SCLK\_A0#  
6,11 M\_SCKE\_A0  
6,11 M\_SCKE\_A1  
6,11 M\_CAS\_A#  
6,11 M\_RAS\_A#  
6,11 M\_WE\_A#

8,10,15,24,31 SMB\_CLK  
8,10,15,24,31 SMB\_DATA

6,11 M\_ODT\_A0  
6,11 M\_ODT\_A1

M\_ODT\_A0 114  
M\_ODT\_A1 119  
ODT0 114  
ODT1 119

M\_DQM\_A0 10  
M\_DQM\_A1 26  
M\_DQM\_A2 52  
M\_DQM\_A3 67  
M\_DQM\_A4 130  
M\_DQM\_A5 147  
M\_DQM\_A6 170  
M\_DQM\_A7 185  
DM0  
DM1  
DM2  
DM3  
DM4  
DM5  
DM6  
DM7

M\_DQS\_A0 13  
M\_DQS\_A#0 11  
DQS0  
DQS#0

M\_DQS\_A1 31  
M\_DQS\_A#1 29  
DQS1  
DQS#1

M\_DQS\_A2 51  
M\_DQS\_A#2 49  
DQS2  
DQS#2

M\_DQS\_A3 70  
M\_DQS\_A#3 68  
DQS3  
DQS#3

M\_DQS\_A4 131  
M\_DQS\_A#4 129  
DQS4  
DQS#4

M\_DQS\_A5 148  
M\_DQS\_A#5 146  
DQS5  
DQS#5

M\_DQS\_A6 169  
M\_DQS\_A#6 167  
DQS6  
DQS#6

M\_DQS\_A7 188  
M\_DQS\_A#7 186  
DQS7  
DQS#7

DDR2\_SODIMM\_200P

DDR1A

DQ0 5  
DQ1 7  
DQ2 17  
DQ3 19  
DQ4 4  
DQ5 6  
DQ6 14  
DQ7 23  
DQ8 25  
DQ9 35  
DQ10 37  
DQ11 20  
DQ12 22  
DQ13 36  
DQ14 38  
DQ15 43  
DQ16 45  
DQ17 55  
DQ18 57  
DQ19 44  
DQ20 46  
DQ21 56  
DQ22 58  
DQ23 61  
DQ24 63  
DQ25 73  
DQ26 75  
DQ27 62  
DQ28 64  
DQ29 74  
DQ30 76  
DQ31 123  
DQ32 125  
DQ33 135  
DQ34 137  
DQ35 128  
DQ36 124  
DQ37 126  
DQ38 134  
DQ39 136  
DQ40 141  
DQ41 143  
DQ42 151  
DQ43 153  
DQ44 140  
DQ45 142  
DQ46 154  
DQ47 157  
DQ48 159  
DQ49 173  
DQ50 175  
DQ51 158  
DQ52 180  
DQ53 174  
DQ54 176  
DQ55 179  
DQ56 181  
DQ57 189  
DQ58 191  
DQ59 180  
DQ60 182  
DQ61 192  
DQ62 194  
DQ63 194  
M\_A\_D4  
M\_A\_D5  
M\_A\_D6  
M\_A\_D7  
M\_A\_D1  
M\_A\_D0  
M\_A\_D3  
M\_A\_D2  
M\_A\_D12  
M\_A\_D13  
M\_A\_D10  
M\_A\_D11  
M\_A\_D9  
M\_A\_D8  
M\_A\_D14  
M\_A\_D15  
M\_A\_D20  
M\_A\_D21  
M\_A\_D19  
M\_A\_D18  
M\_A\_D17  
M\_A\_D16  
M\_A\_D23  
M\_A\_D28  
M\_A\_D30  
M\_A\_D31  
M\_A\_D24  
M\_A\_D25  
M\_A\_D27  
M\_A\_D26  
M\_A\_D32  
M\_A\_D33  
M\_A\_D34  
M\_A\_D35  
M\_A\_D36  
M\_A\_D37  
M\_A\_D38  
M\_A\_D39  
M\_A\_D43  
M\_A\_D42  
M\_A\_D45  
M\_A\_D46  
M\_A\_D40  
M\_A\_D41  
M\_A\_D48  
M\_A\_D49  
M\_A\_D50  
M\_A\_D51  
M\_A\_D52  
M\_A\_D53  
M\_A\_D54  
M\_A\_D55  
M\_A\_D56  
M\_A\_D57  
M\_A\_D58  
M\_A\_D59  
M\_A\_D60  
M\_A\_D61  
M\_A\_D62  
M\_A\_D63

DDR2\_200  
SL\_SODIMM200

DDR1B

VSS\_1 18  
VSS\_2 24  
VSS\_3 41  
VSS\_4 53  
VSS\_5 42  
VSS\_6 54  
VSS\_7 59  
VSS\_8 65  
VSS\_9 66  
VSS\_10 127  
VSS\_11 127  
VSS\_12 139  
VSS\_13 128  
VSS\_14 145  
VSS\_15 165  
VSS\_16 172  
VSS\_17 177  
VSS\_18 177  
VSS\_19 187  
VSS\_20 178  
VSS\_21 190  
VSS\_22 9  
VSS\_23 33  
VSS\_24 155  
VSS\_25 155  
VSS\_26 34  
VSS\_27 132  
VSS\_28 156  
VSS\_29 168  
VSS\_30 2  
VSS\_31 27  
VSS\_32 3  
VSS\_33 15  
VSS\_34 27  
VSS\_35 149  
VSS\_36 161  
VSS\_37 28  
VSS\_38 39  
VSS\_39 40  
VSS\_40 138  
VSS\_41 150  
VSS\_42 162  
VDD\_1 112  
VDD\_2 111  
VDD\_3 117  
VDD\_4 96  
VDD\_5 95  
VDD\_6 118  
VDD\_7 81  
VDD\_8 82  
VDD\_9 103  
VDD\_10 87  
VDD\_11 88  
VDD\_12 104  
VDDSP0 199  
NC1 83  
NC2 120  
NC3 50  
NC4 69  
NCTEST 163  
VREF 1  
GND0 201  
GND1 202  
VSS\_64 47  
VSS\_63 133  
VSS\_62 183  
VSS\_61 77  
VSS\_60 12  
VSS\_59 48  
VSS\_58 184  
VSS\_57 78  
VSS\_56 71  
VSS\_55 72  
VSS\_54 121  
VSS\_53 122  
VSS\_52 196  
VSS\_51 193  
VSS\_50 8

DDR2\_SODIMM\_200P

DDR2\_200  
SL\_SODIMM200

V\_DIMM

C430 0.1u  
C439 2.2u  
C0603  
C0805  
C396 0.1u  
C394 2.2u  
C0603  
C0805

6,11 M\_MAA\_B[13..0] << M\_MAA\_B[13..0]  
6 M\_B\_D[63..0] << M\_B\_D[63..0]  
6 M\_DQS\_B[7..0] << M\_DQS\_B[7..0]  
6 M\_DQM\_B[7..0] << M\_DQM\_B[7..0]  
6,11 M\_SBS\_B[2..0] << M\_SBS\_B[2..0]  
6 M\_DQS\_B# [7..0] << M\_DQS\_B# [7..0]

M\_MAA\_B0 102 A0  
M\_MAA\_B1 101 A1  
M\_MAA\_B2 100 A2  
M\_MAA\_B3 99 A3  
M\_MAA\_B4 98 A4  
M\_MAA\_B5 97 A5  
M\_MAA\_B6 94 A6  
M\_MAA\_B7 92 A7  
M\_MAA\_B8 93 A8  
M\_MAA\_B9 91 A9  
M\_MAA\_B10 105 A10/AP  
M\_MAA\_B11 90 A11  
M\_MAA\_B12 89 A12  
M\_MAA\_B13 116 A13  
X 86 A14  
X 84 A15

M\_SBS\_B2 85 A16/BA2  
M\_SBS\_B0 107 BA0  
M\_SBS\_B1 106 BA1  
M\_SCS\_B0# 110 S0#  
M\_SCS\_B1# 115 S1#  
SCLK\_B1 30 CK0  
SCLK\_B0 164 CK1  
SCLK\_B0# 166 CK1#  
M\_SCKE\_B0 79 CKE0  
M\_SCKE\_B1 80 CKE1  
M\_CAS\_B# 113 CAS#  
M\_RAS\_B# 108 RAS#  
M\_WE\_B# 109 WE#

8,9,15,24,31 SMB\_CLK << SMB\_CLK  
8,9,15,24,31 SMB\_DATA << SMB\_DATA  
M\_ODT\_B0 114 ODT0  
M\_ODT\_B1 119 ODT1

M\_DQM\_B0 10 DM0  
M\_DQM\_B1 26 DM1  
M\_DQM\_B2 52 DM2  
M\_DQM\_B3 67 DM3  
M\_DQM\_B4 130 DM4  
M\_DQM\_B5 147 DM5  
M\_DQM\_B6 170 DM6  
M\_DQM\_B7 185 DM7

M\_DQS\_B0 13 DQS0  
M\_DQS\_B#0 11 DQS#0  
M\_DQS\_B1 31 DQS1  
M\_DQS\_B#1 29 DQS#1

M\_DQS\_B2 51 DQS2  
M\_DQS\_B#2 49 DQS#2

M\_DQS\_B3 70 DQS3  
M\_DQS\_B#3 68 DQS#3

M\_DQS\_B4 131 DQS4  
M\_DQS\_B#4 129 DQS#4

M\_DQS\_B5 148 DQS5  
M\_DQS\_B#5 146 DQS#5

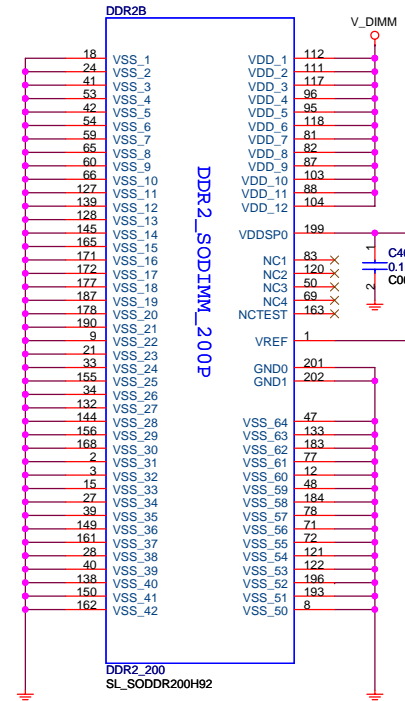
M\_DQS\_B6 169 DQS6  
M\_DQS\_B#6 167 DQS#6

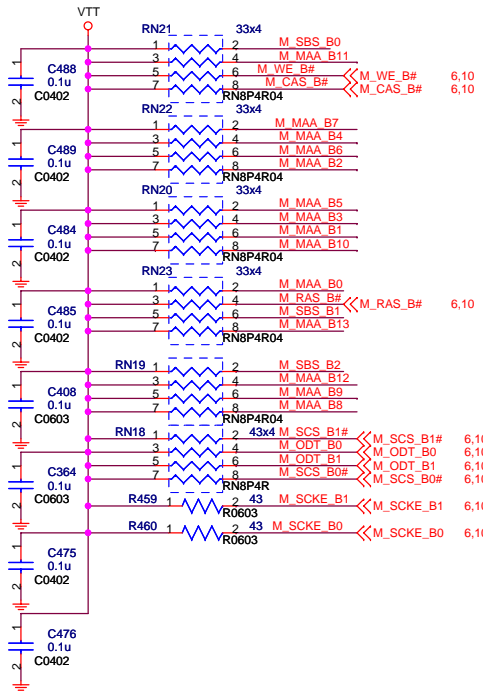
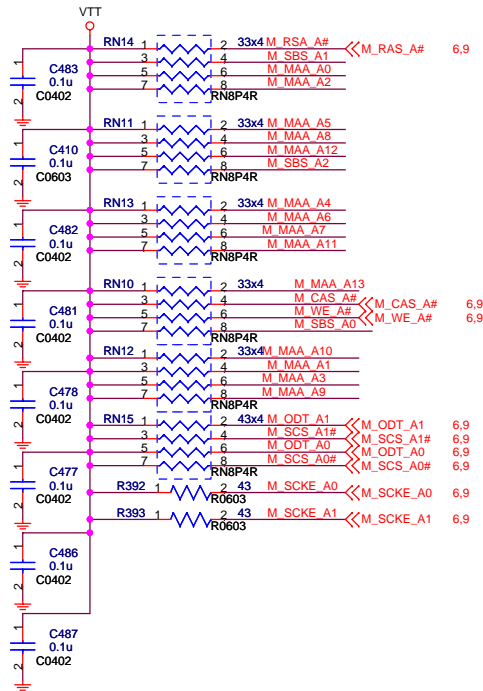
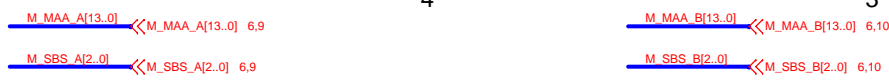
M\_DQS\_B7 188 DQS7  
M\_DQS\_B#7 186 DQS#7

DDR2\_SODIMM\_200P

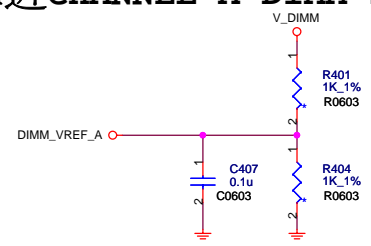
DDR2A  
DQ0 5 M\_B\_D4  
DQ1 7 M\_B\_D5  
DQ2 17 M\_B\_D6  
DQ3 19 M\_B\_D7  
DQ4 4 M\_B\_D1  
DQ5 6 M\_B\_D0  
DQ6 14 M\_B\_D3  
DQ7 16 M\_B\_D2  
DQ8 23 M\_B\_D12  
DQ9 25 M\_B\_D13  
DQ10 35 M\_B\_D10  
DQ11 37 M\_B\_D11  
DQ12 22 M\_B\_D9  
DQ13 36 M\_B\_D14  
DQ14 38 M\_B\_D15  
DQ15 43 M\_B\_D20  
DQ16 45 M\_B\_D21  
DQ17 55 M\_B\_D19  
DQ18 57 M\_B\_D18  
DQ19 44 M\_B\_D17  
DQ20 46 M\_B\_D16  
DQ21 56 M\_B\_D23  
DQ22 58 M\_B\_D22  
DQ23 61 M\_B\_D26  
DQ24 63 M\_B\_D25  
DQ25 73 M\_B\_D28  
DQ26 75 M\_B\_D27  
DQ27 62 M\_B\_D25  
DQ28 64 M\_B\_D24  
DQ29 74 M\_B\_D30  
DQ30 76 M\_B\_D31  
DQ31 123 M\_B\_D32  
DQ32 125 M\_B\_D33  
DQ33 135 M\_B\_D34  
DQ34 137 M\_B\_D35  
DQ35 124 M\_B\_D36  
DQ36 126 M\_B\_D37  
DQ37 134 M\_B\_D38  
DQ38 136 M\_B\_D39  
DQ39 141 M\_B\_D42  
DQ40 143 M\_B\_D40  
DQ41 151 M\_B\_D41  
DQ42 153 M\_B\_D46  
DQ43 140 M\_B\_D44  
DQ44 142 M\_B\_D45  
DQ45 152 M\_B\_D47  
DQ46 154 M\_B\_D43  
DQ47 157 M\_B\_D48  
DQ48 159 M\_B\_D49  
DQ49 173 M\_B\_D50  
DQ50 175 M\_B\_D51  
DQ51 158 M\_B\_D52  
DQ52 160 M\_B\_D53  
DQ53 174 M\_B\_D54  
DQ54 176 M\_B\_D55  
DQ55 179 M\_B\_D56  
DQ56 181 M\_B\_D57  
DQ57 189 M\_B\_D58  
DQ58 191 M\_B\_D59  
DQ59 180 M\_B\_D60  
DQ60 182 M\_B\_D61  
DQ61 192 M\_B\_D62  
DQ62 194 M\_B\_D63  
DQ63

DDR2\_200  
SL\_SODDR200H92

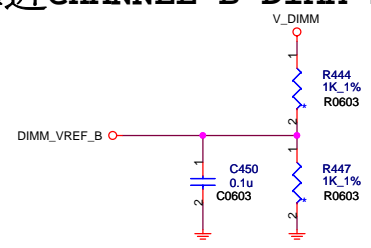




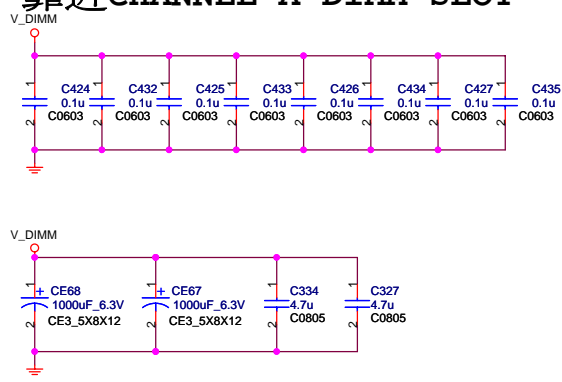
## 靠近CHANNEL A DIMM SLOT



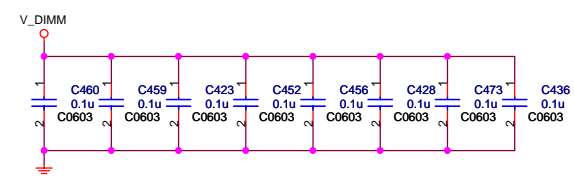
## 靠近CHANNEL B DIMM SLOT



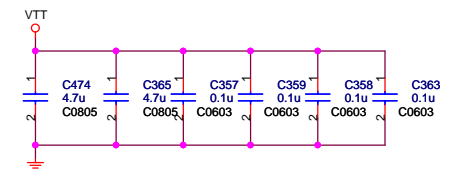
## 靠近CHANNEL A DIMM SLOT



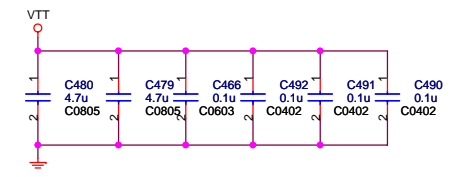
## 靠近CHANNEL B DIMM SLOT



## 靠近CHANNEL A VTT ISLAND

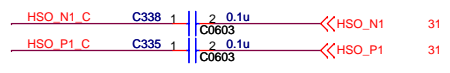
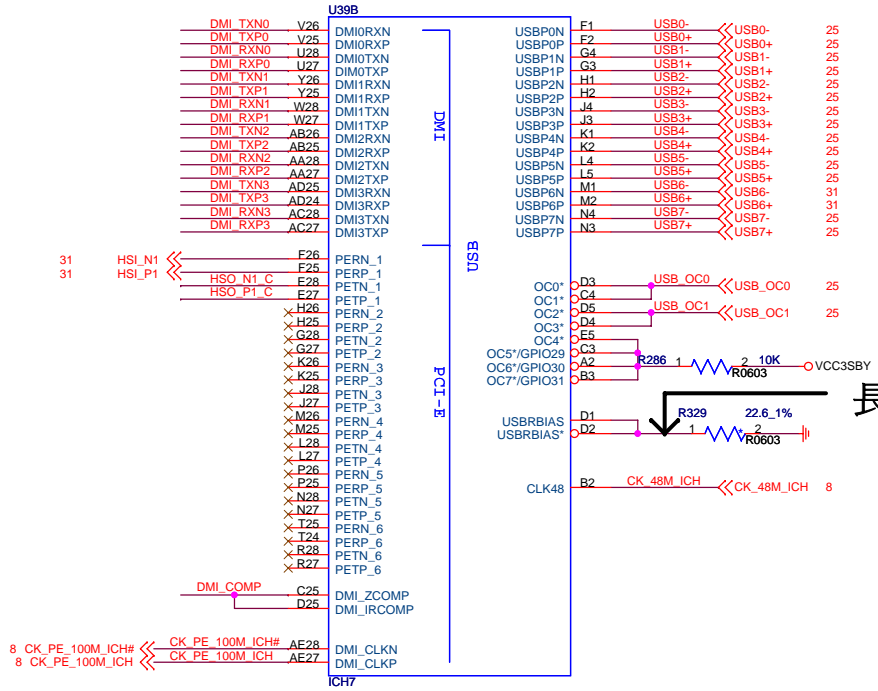
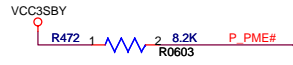
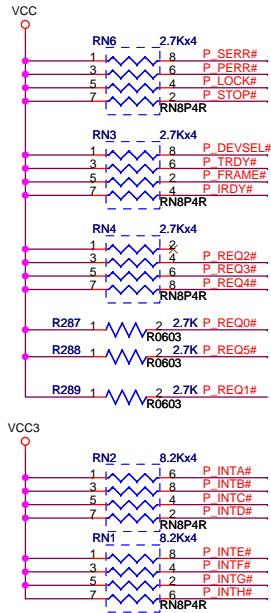
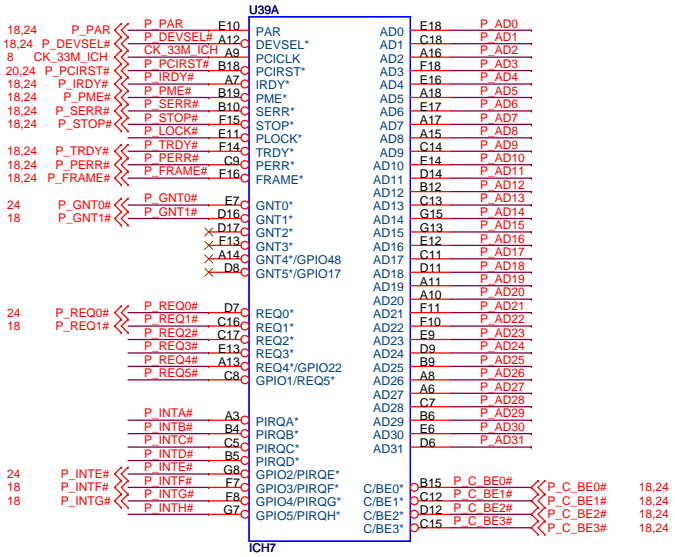


## 靠近CHANNEL B VTT ISLAND

















5

4

3

2

1

D

D

C

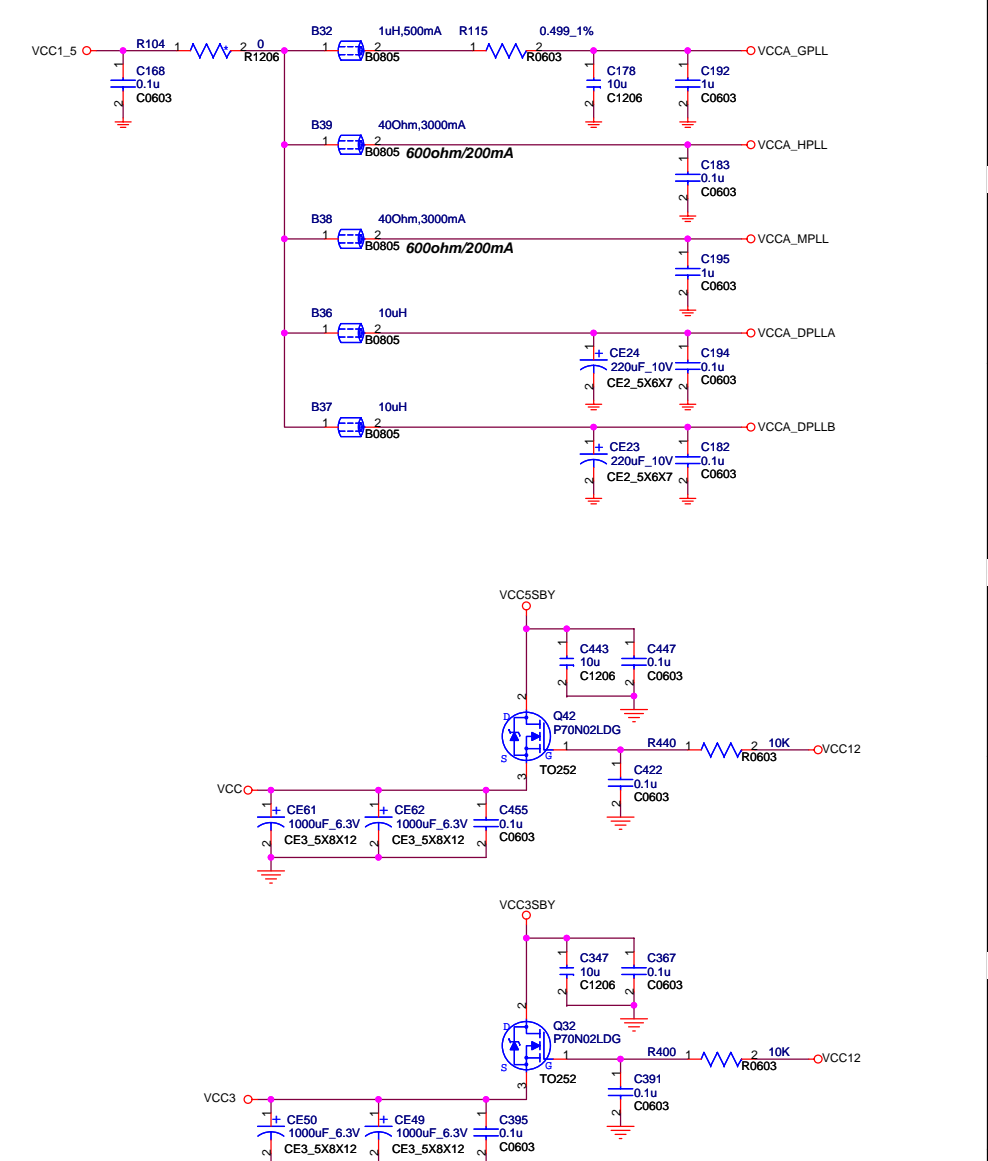
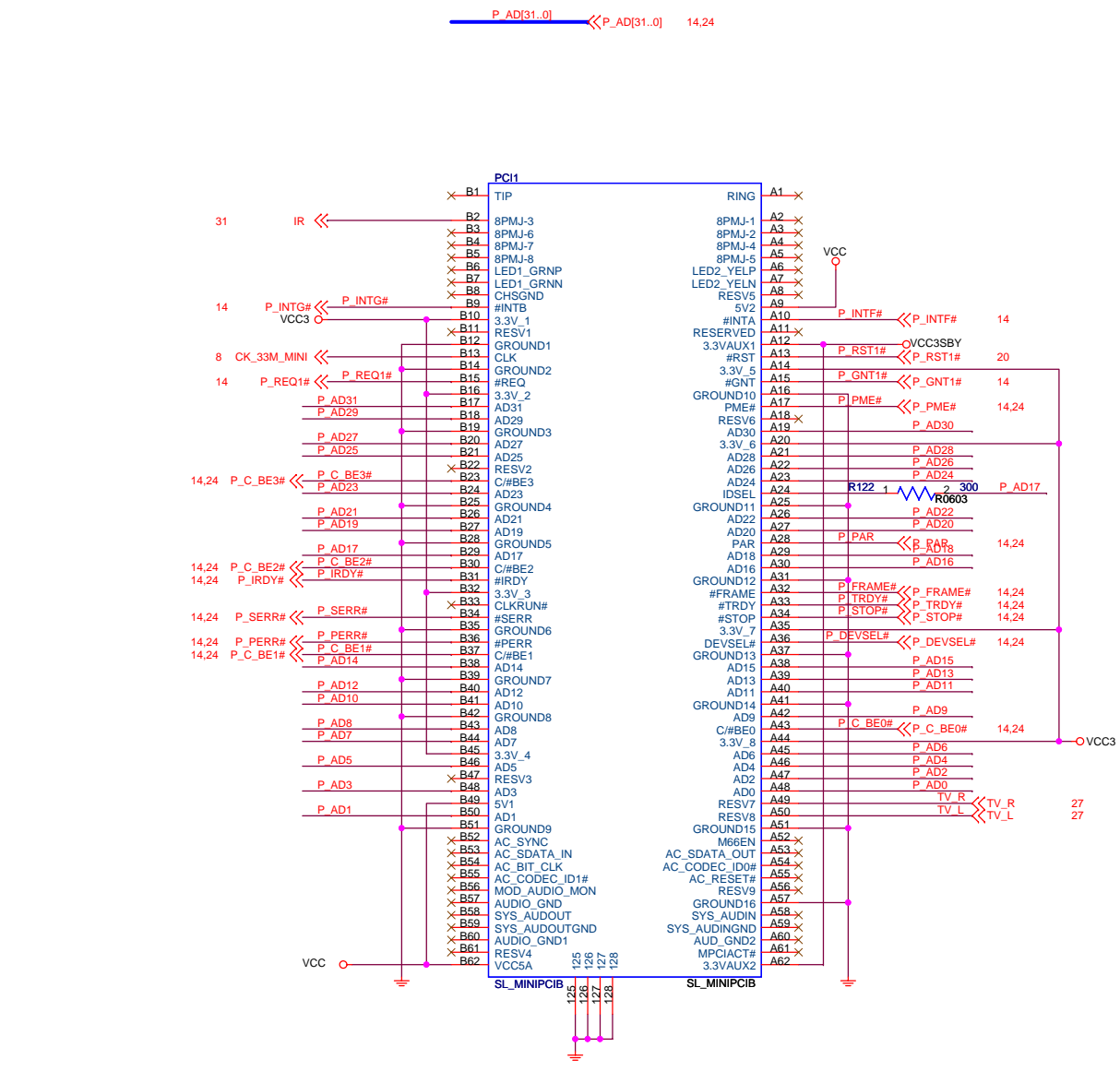
C

B

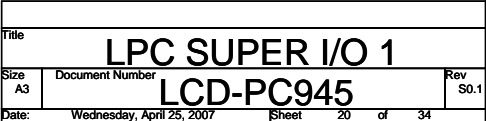
B

A

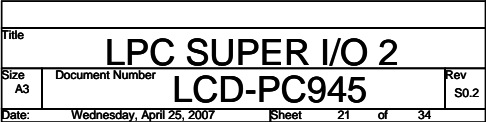
A

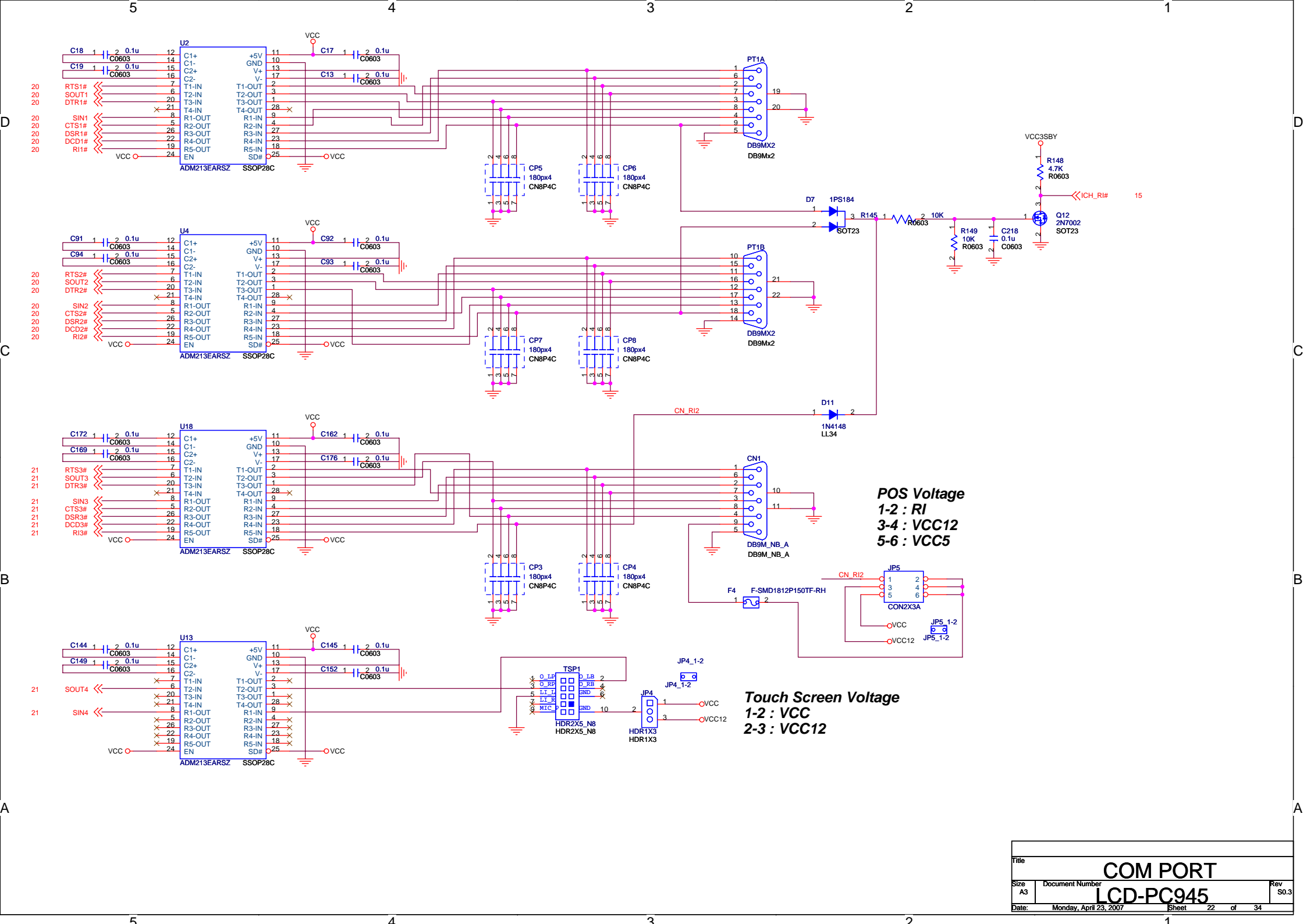




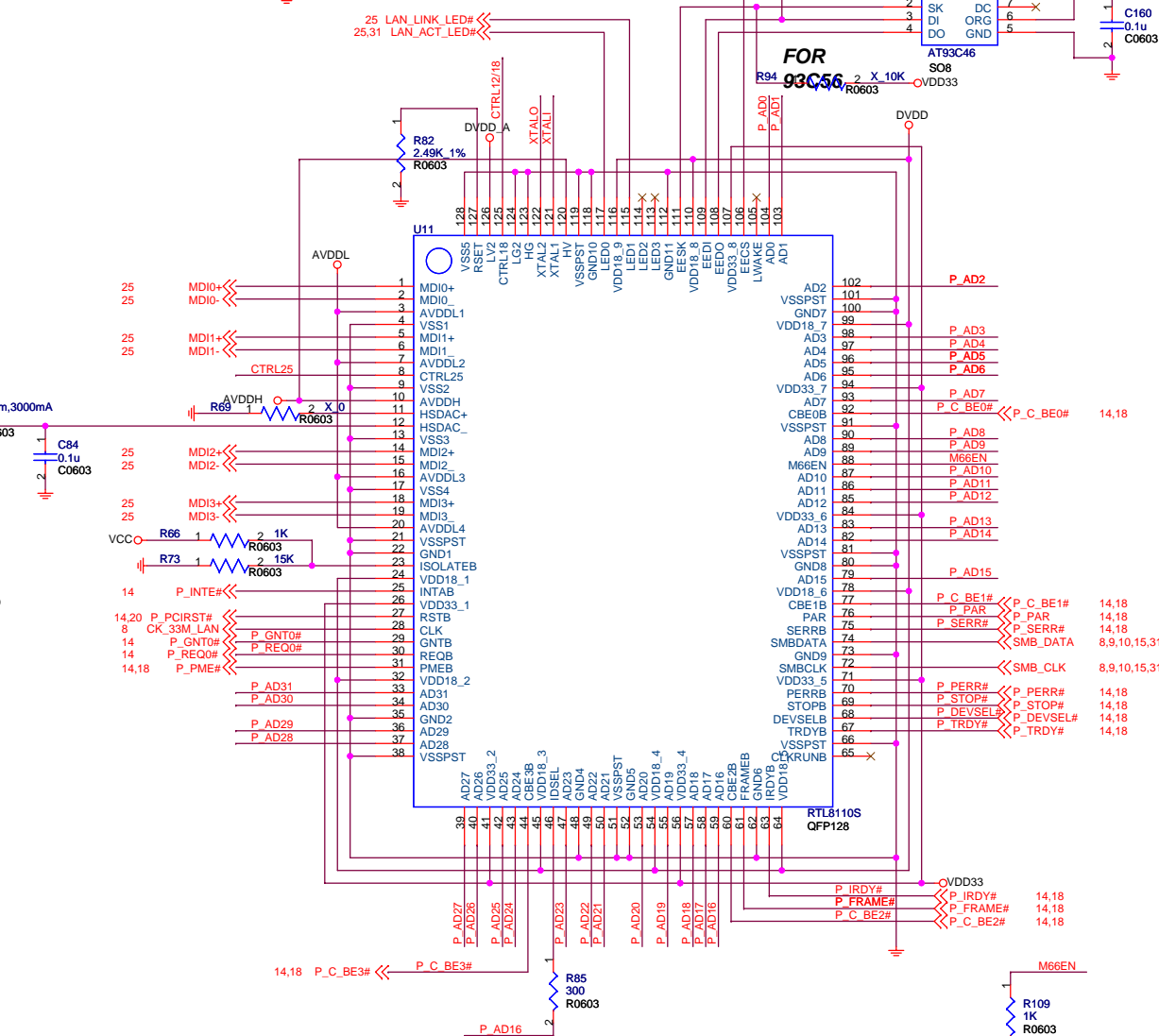
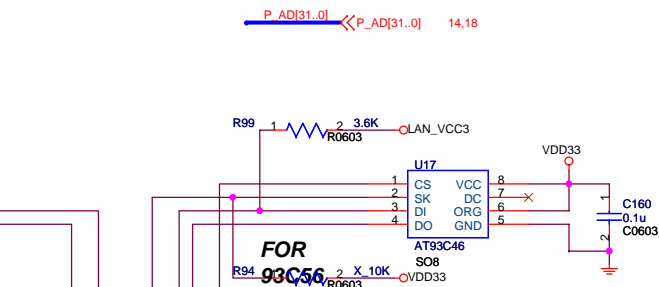




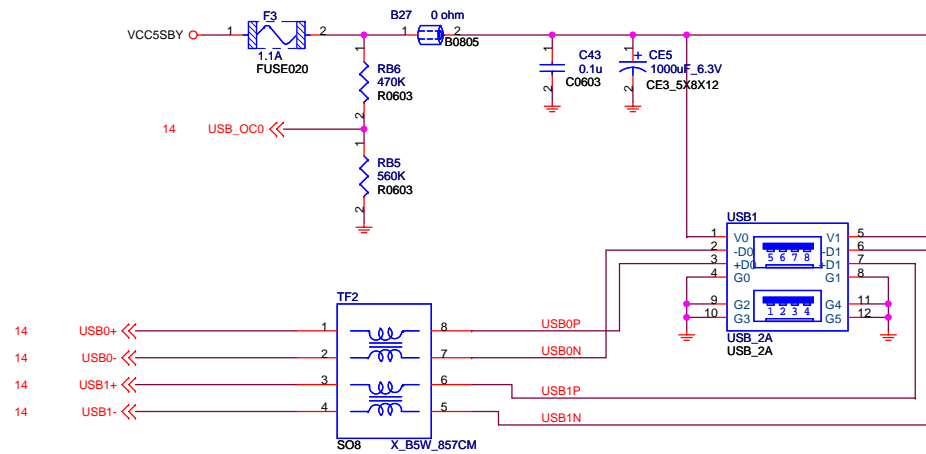




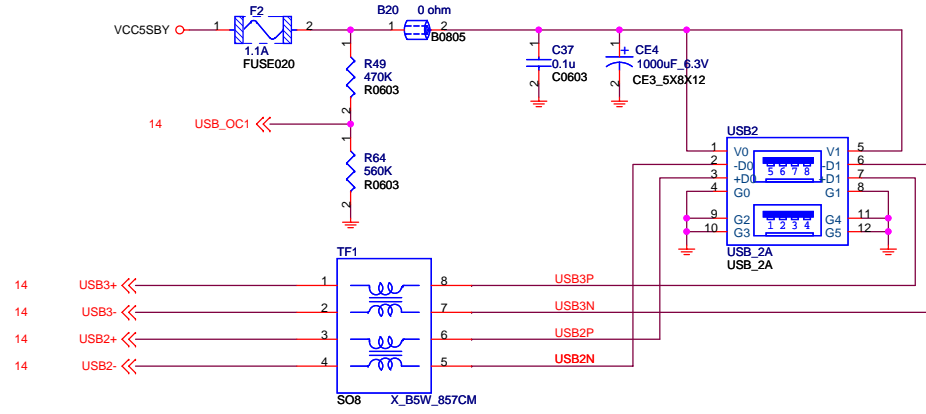




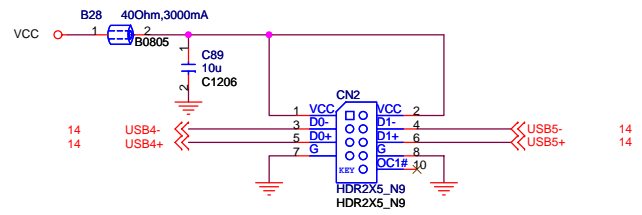
Title			
PCI LAN(RTL8110SB)			
Size	Document Number	Rev	
A3	LCD-PC945	S0.1	
Date:	Monday, April 23, 2007	Sheet	24 of 34



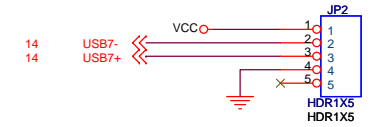
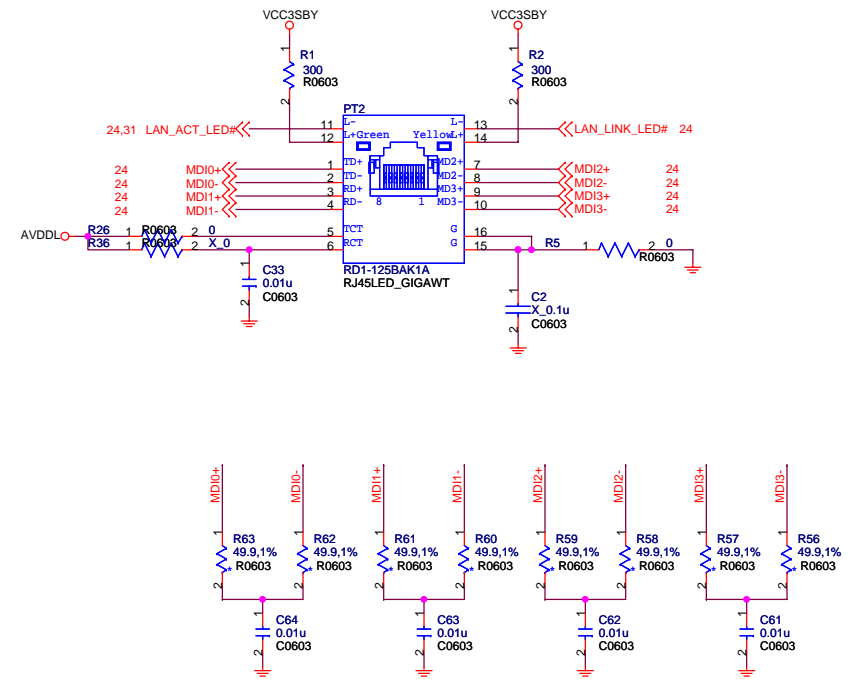
兩端直接短路



兩端直接短路



FRONT USB



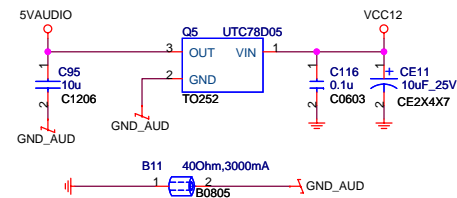
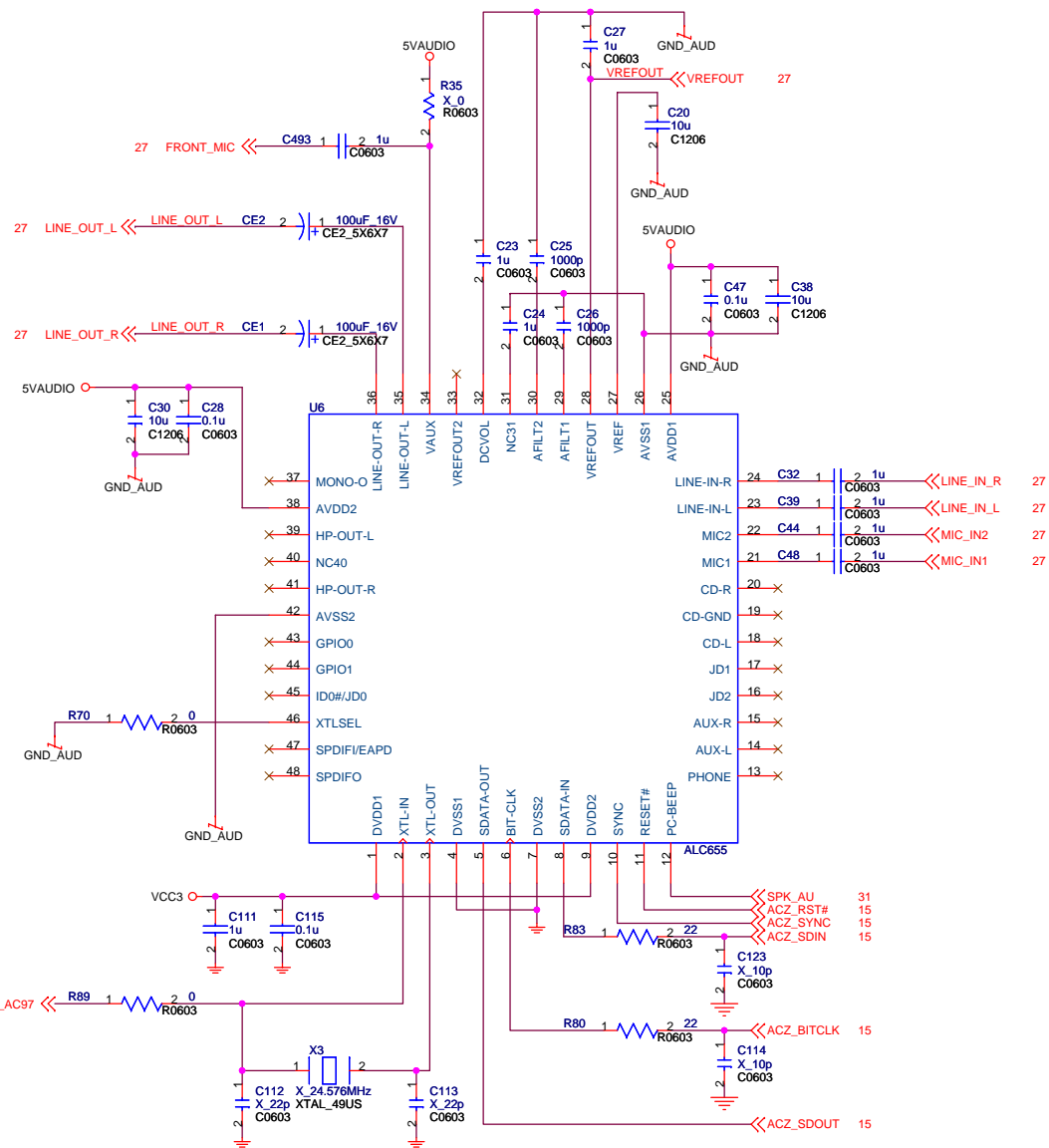
5

4

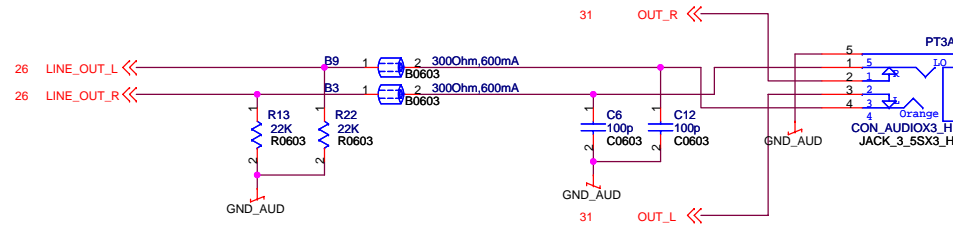
3

2

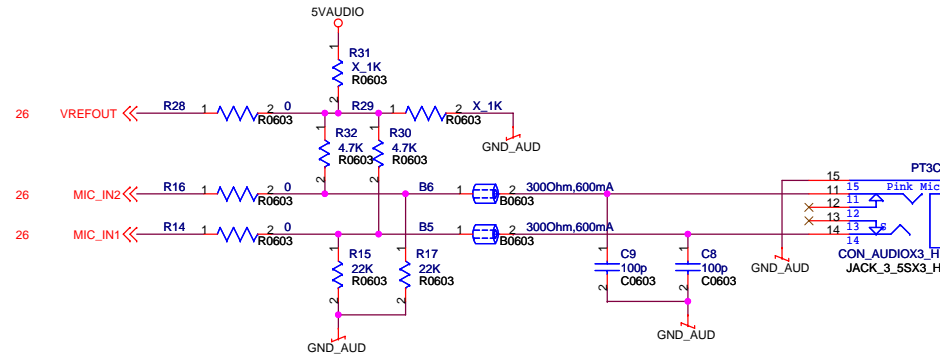
1



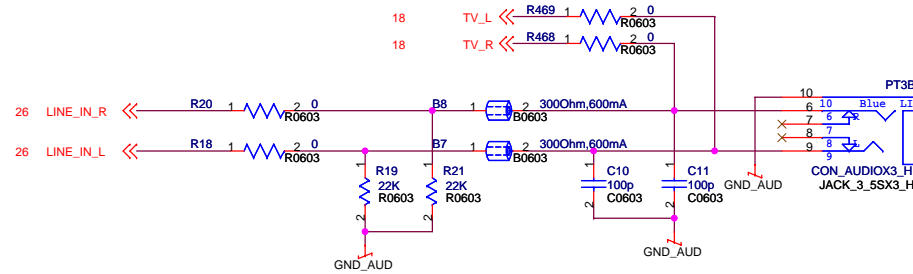




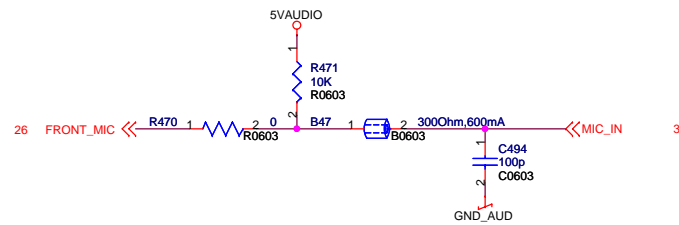
**LINE-OUT**



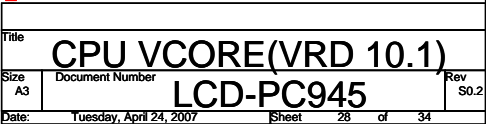
**MIC-IN**

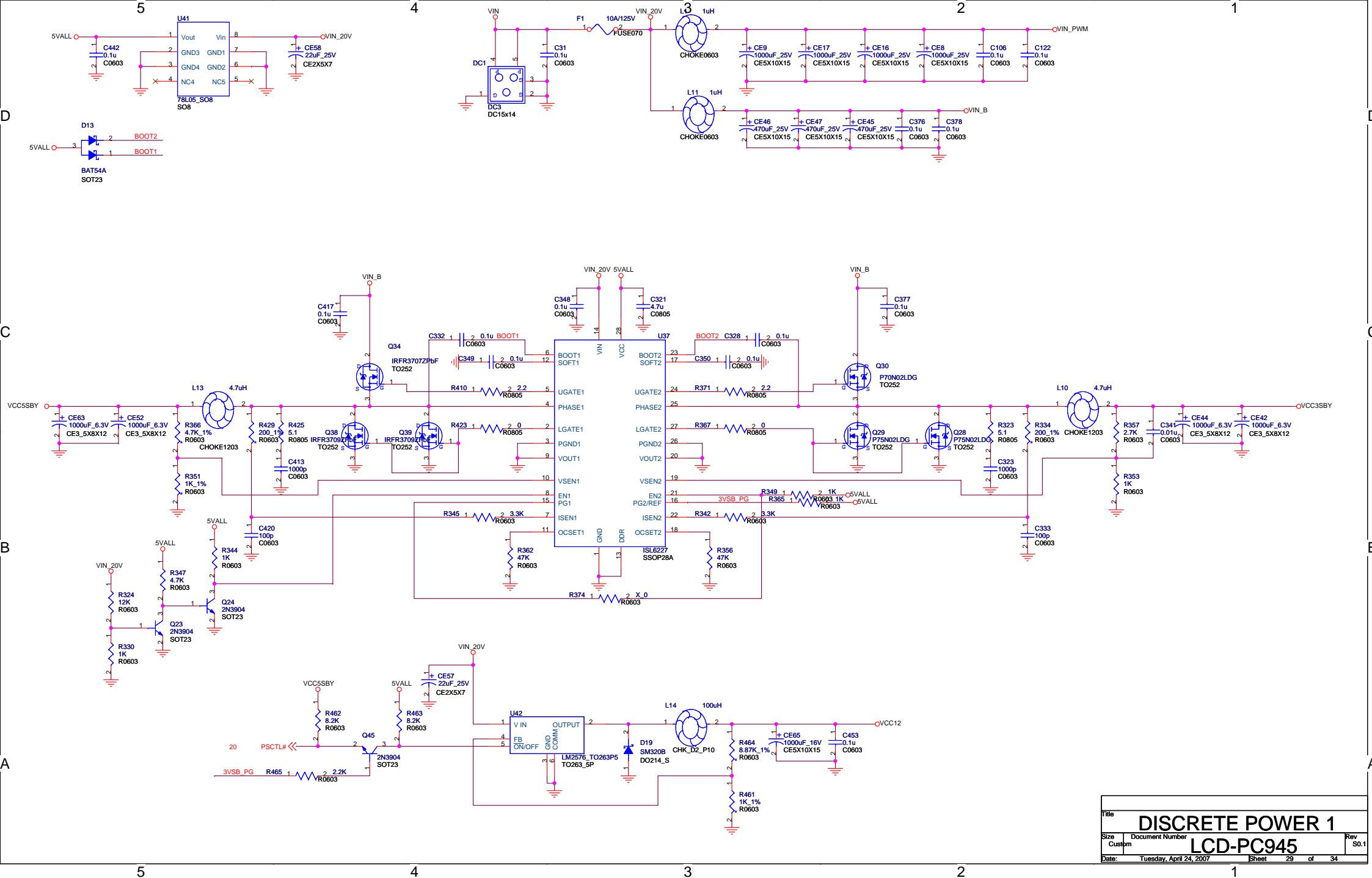


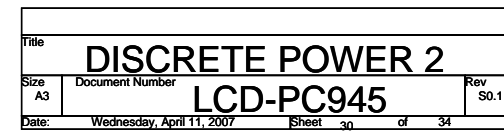
**LINE-IN**

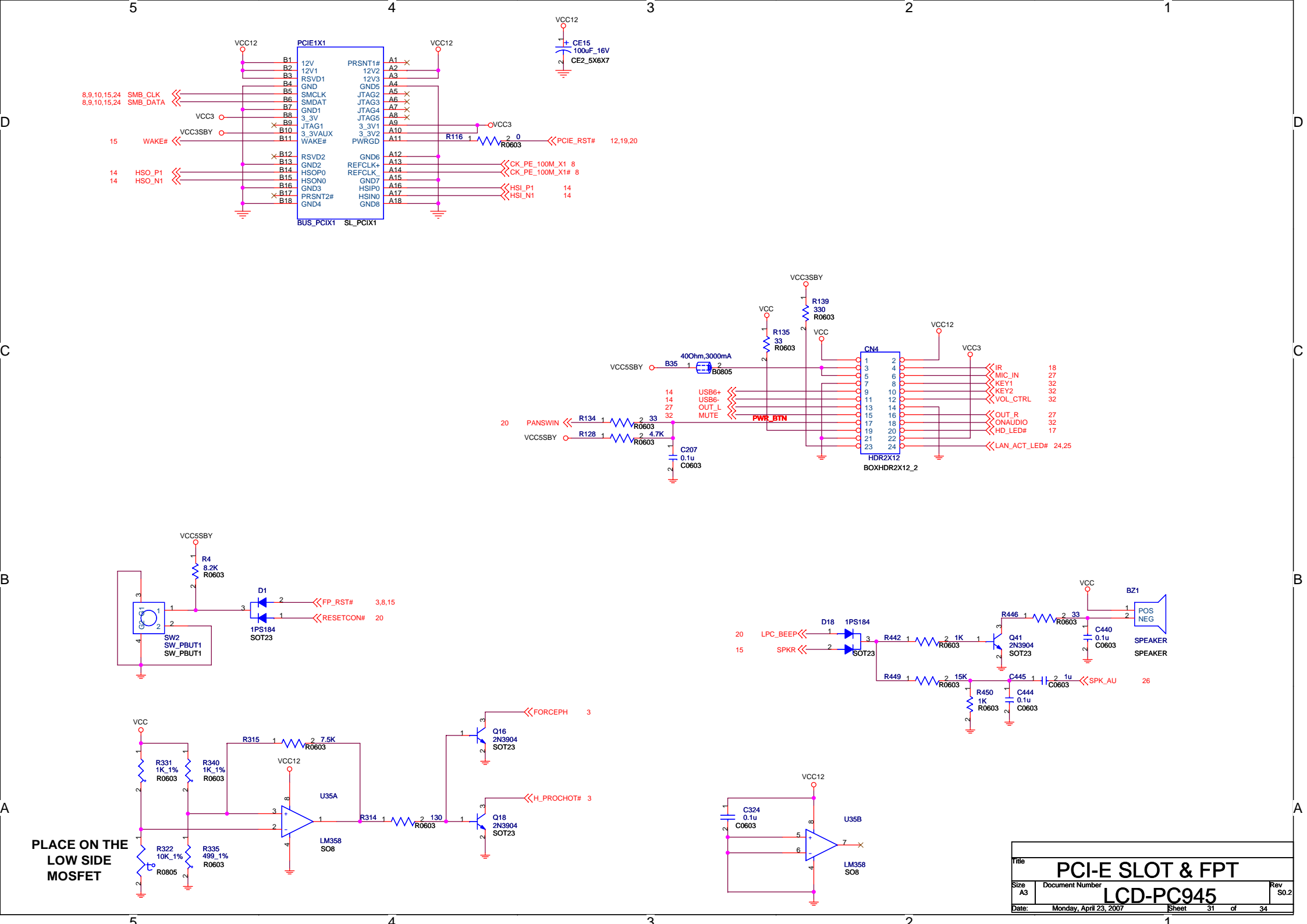


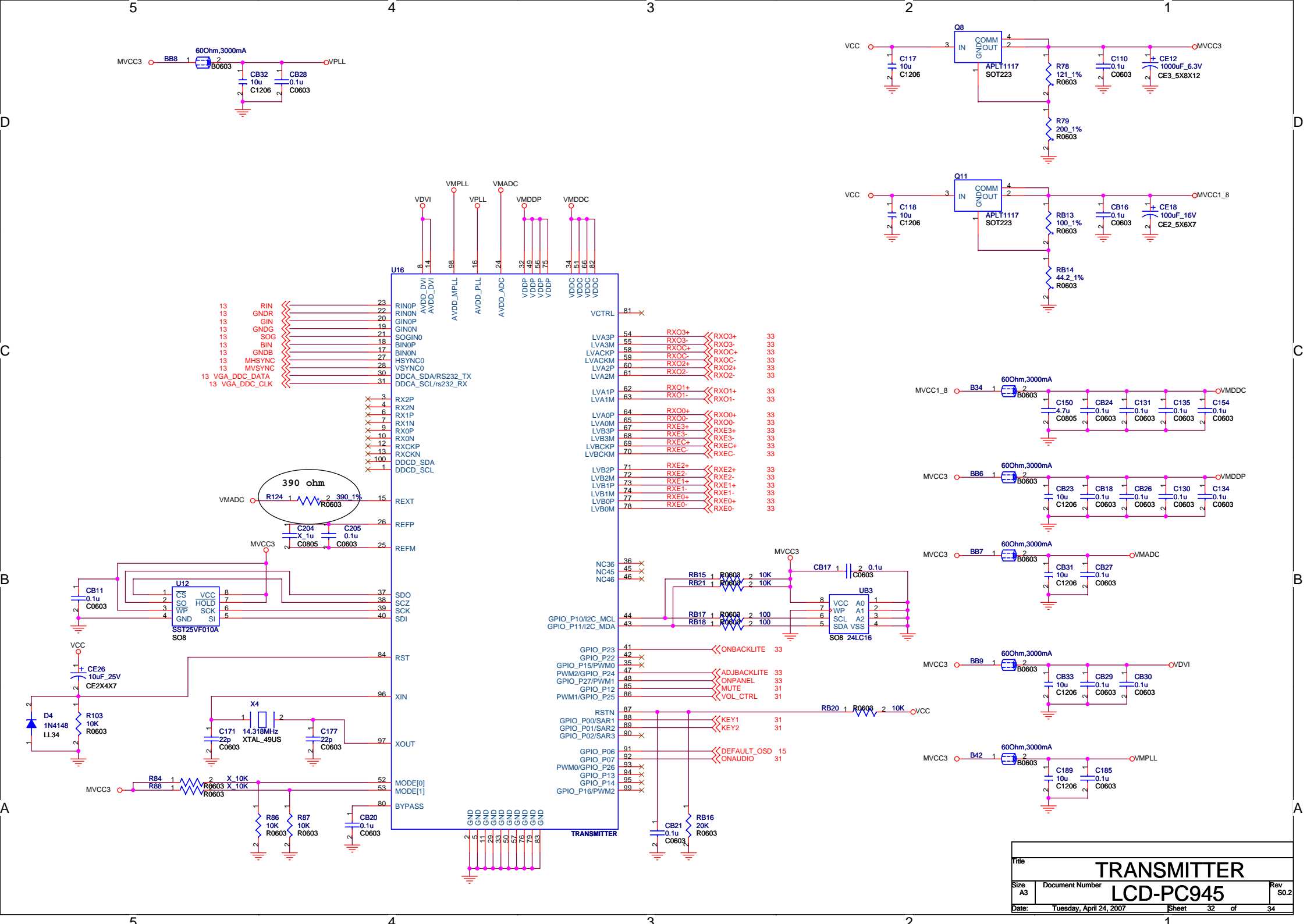
Title			AUDIO CONNECTOR	
Size	Document Number		LCD-PC945	
A3			Rev S0.2	
Date:	Monday, April 23, 2007		Sheet	27 of 34



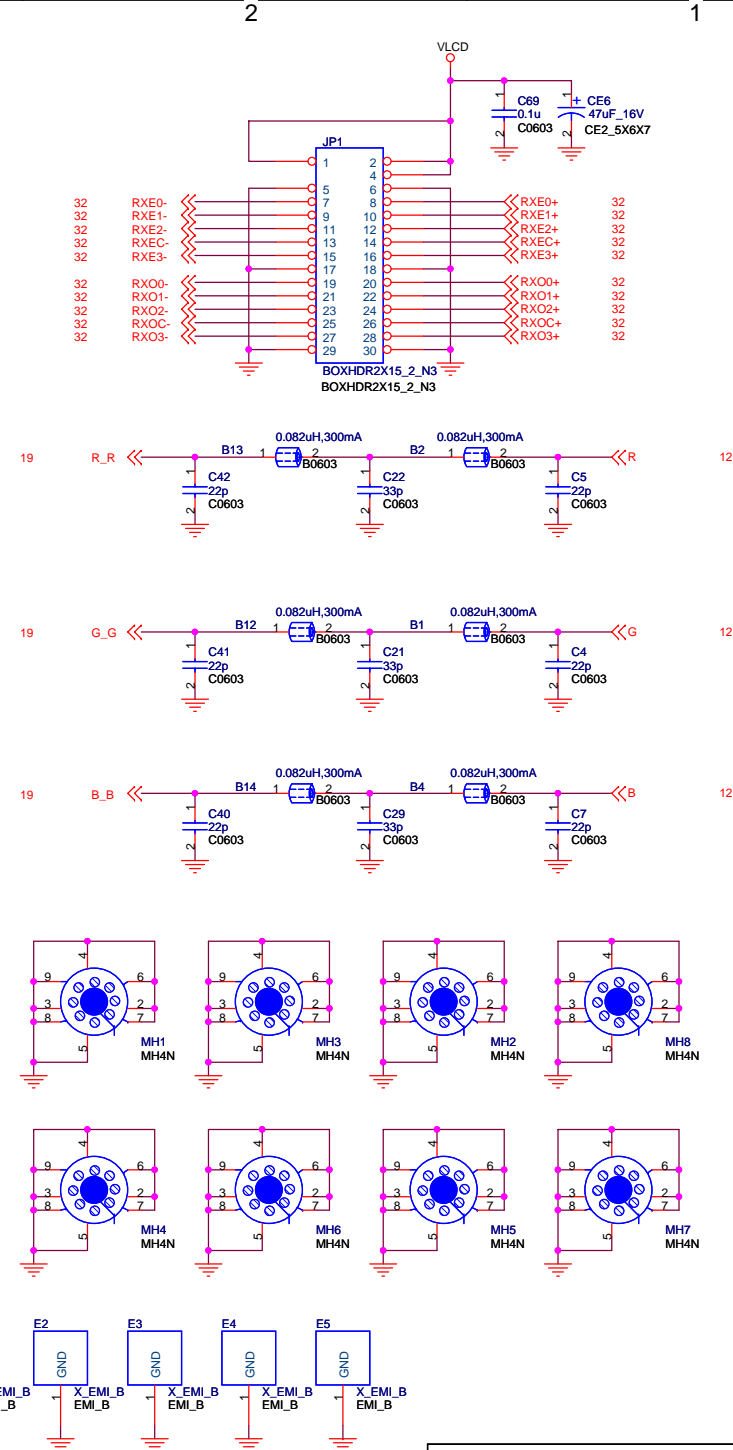
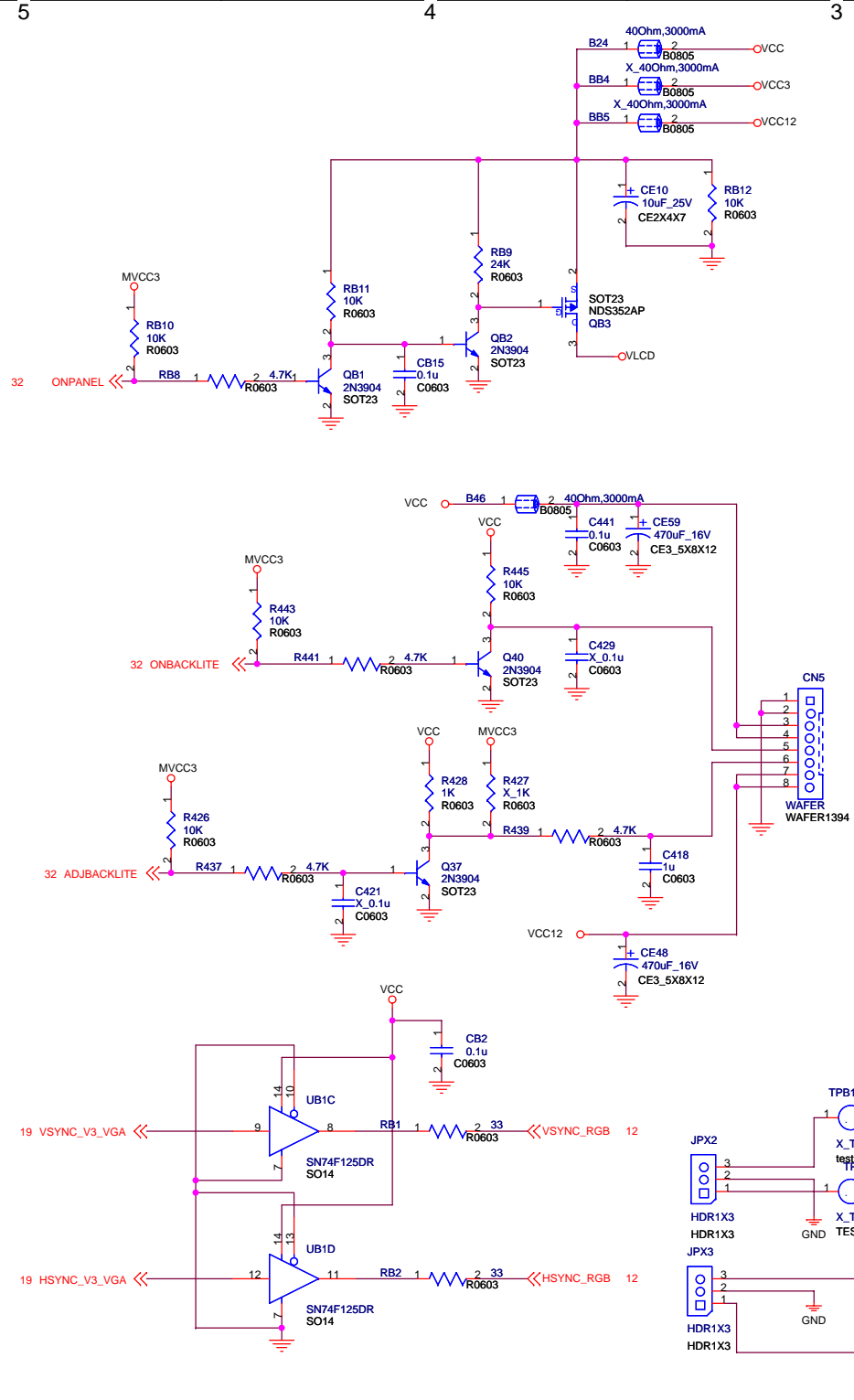


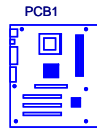












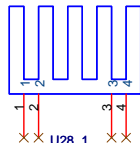
MS-7401, Ren



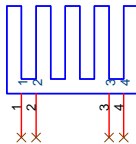
jp101  
PIN HEADER



jp102  
PIN HEADER

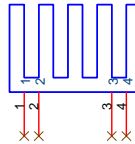


NB-HEAT SINK



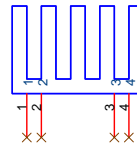
U16\_1  
U16HEAT SINK

footprint is HEATSINK68X18



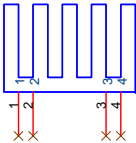
U33\_1  
U33HEAT SINK

footprint is HEATSINK68X18



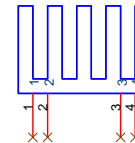
Q46\_1  
Q46,Q49,Q55 HEAT SINK

footprint is HEATSINK68X18



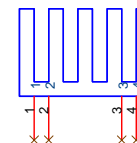
Q52\_1  
HEAT SINK

footprint is HEATSINK68X18



Q53\_1  
Q53,Q54HEAT SINK

footprint is HEATSINK68X18



U39\_1  
U39HEAT SINK

footprint is HEATSINK68X18

Title			PANEL DC-DC POWER
Size	Document Number	Rev	
B	LCD-PC945	S0.2	
Date:	Wednesday, April 25, 2007	Sheet	34 of 34